



## HEALTH CARE RESIDENCE

### MATERA

**T**he facility is located in Via Enzo Ferrari, within the service area of the ASI Consortium industrial development district of the province of Matera. It was built by the Centro Geriatrico Matera srl specialising in healthcare residences (RSA) for the San Raffaele Group in Rome

### THE PROJECT

**T**he WebGarage platform communicates in IP on a Modbus protocol with the system controllers (YHC700, YLC880, relative expansions and Joy terminals) which in turn control:

- Heat pumps
- Condensing boilers
- DHW production with integration from solar panels and cycle enabling for the prevention of Legionnaire's disease
- Air handling units and over 200 fan coils on IP network.

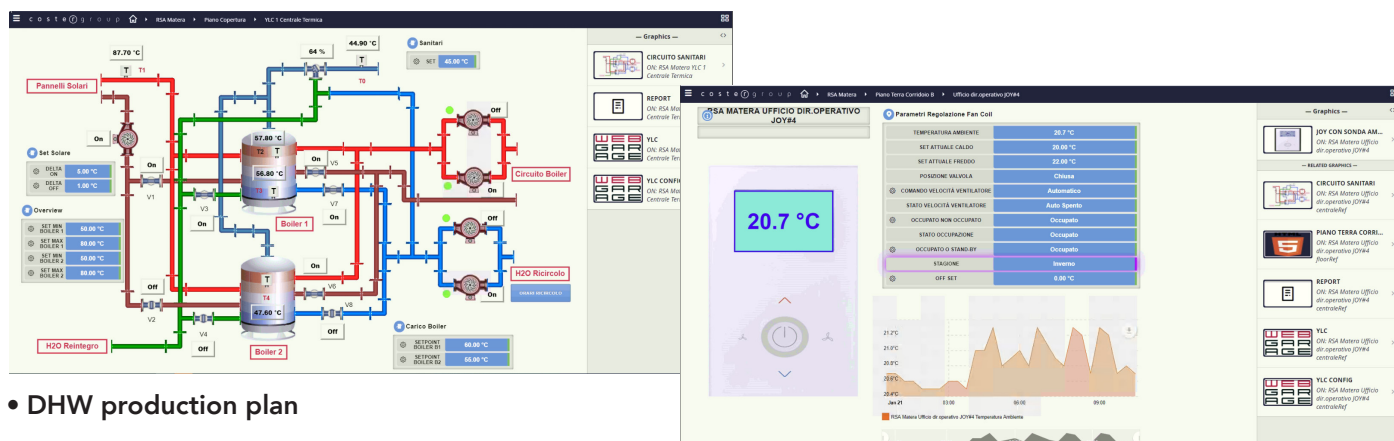
### THE METHOD

- WEBGARAGE supervision and management platform
- 2 Air-to-water heat pumps 350 kW each
- 5 Condensation boilers 135 kW each
- 2 primary air AHUs of 200003/h each
- Domestic water production with integration from 120 m<sup>2</sup> solar system
- Rainwater recovery system
- Sensors, actuators and production valves Coster.
- Management of 230 fan coils with local control of set point and operating mode



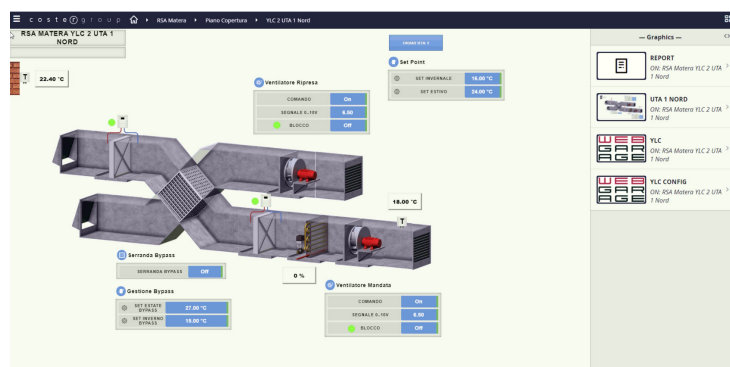


**W**ebGarage Is the Web-based supervision platform for Building Automation and Energy Management systems. It allows the design, implementation and management of building maintenance with a focus on energy saving, creating an out-and-out 'ECOsystem' of products and services. Ensures maximum simplicity and efficiency when configuring even large control systems.



• DHW production plan

• Single fan coil controller management



• Air handling units

# WEB GARAGE

- Realisation of customised graphics on WebGarage platform.
- Easy connection with variables from the field, integrated via standard protocols
- Full YLC system: YHC 700 + YLC 880 + PEC 442 and Coster Group sensors